

## > PRODUCT SPECIFICATIONS

# DMXNet<sup>TM</sup> MANAGER



### Centralized Management of Datamax Printers



Supervisor PC



Datamax Printers

DMXNet Manager provides a graphical user interface from which you can manage all of your network connected Datamax printers. From initial deployment configuration to on-going supervision and control, use DMXNet Manager for the lifetime management of your network of Datamax printers.

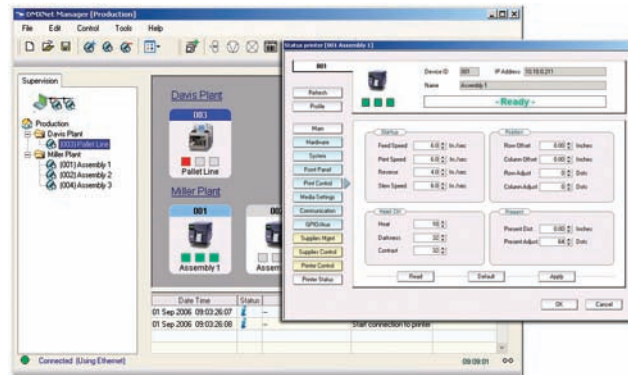
Whether deploying or managing your printers, DMXNet Manager's centralized, remote control of your enterprise-wide distributed printers saves you significant time and lowers your costs. And when you reduce printer downtime with DMXNet Manager, you will also reduce operations downtime and related loss of productivity costs.

#### Configuration Made Easy, Remotely

From hardware, system, front panel, and printer control settings to media, communications, GPIO and auxiliary settings, DMXNet Manager provides remote configuration for easy printer initialization and updates. You will also benefit from DMXNet Manager's printer duplication capability and configuration profiles to configure like printers quickly.

#### Control Performed Proactively

Supplies management, supplies control, and printer control combine to give you proactive management of your printer network. In addition to standard printer controls, such as pause printer and form feed, DMXNet Manager's printer controls include a communications feature to download firmware, fonts, graphics, labels, profiles, MCL printer applications, lookup files, and DPL files to your Datamax printers. What's more, a scripting utility allows you to perform identical procedures, such as downloading new firmware or a configuration profile, automatically on many or all printers across your printer network.



[www.datamaxcorp.com](http://www.datamaxcorp.com)



**CORPORATE HEADQUARTERS**  
4501 Parkway Commerce Blvd.  
Orlando, Florida USA 32808  
Phone (407) 578-8007  
Fax (407) 578-8377  
[customer care@datamaxcorp.com](mailto:customer care@datamaxcorp.com)

**DATAMAX LABELS AND RIBBONS**  
Phone (800) 321-2233  
Fax (800) 436-8920  
[dmxmedia@datamaxcorp.com](mailto:dmxmedia@datamaxcorp.com)

**DATAMAX LATIN AMERICA**  
Phone (407) 523-5520  
Fax (407) 578-8377  
[tdelgado@datamaxcorp.com](mailto:tdelgado@datamaxcorp.com)

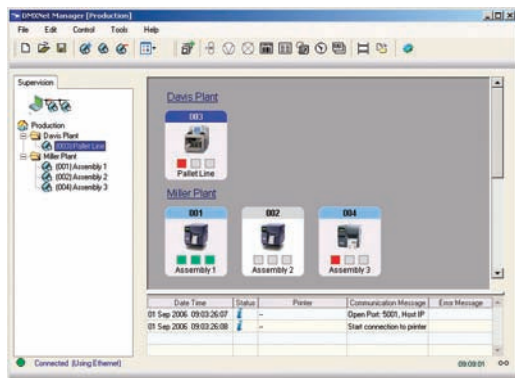
**DATAMAX INTERNATIONAL**  
Phone +44 1279 772200  
Fax +44 1279 424448  
[rbyrne@datamaxcorp.com](mailto:rbyrne@datamaxcorp.com)

**DATAMAX ASIA-PACIFIC  
REPRESENTATIVE OFFICE**  
Phone +65-6542-2611  
Fax +65-6542-3611  
[datamax@pacific.net.sg](mailto:datamax@pacific.net.sg)

**DATAMAX CHINA  
REPRESENTATIVE OFFICE**  
Phone +86 21 64952882  
[datamax\\_cn@china.com](mailto:datamax_cn@china.com)

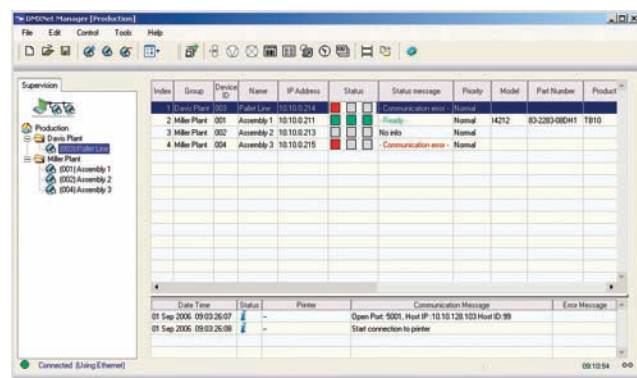
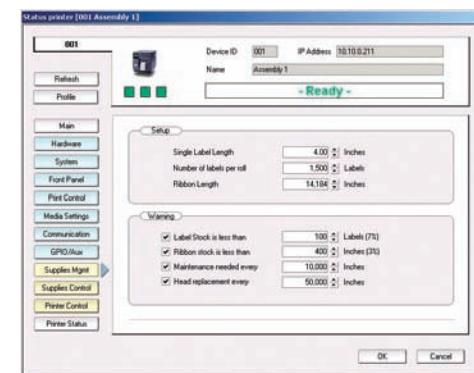
# DMXNet Manager - Product Specifications

## Supervision Done At-a-Glance



Status indicators and a warning system included in DMXNet Manager's supervision mode help you keep your printers operating at peak performance. Color-coded indicators are updated regularly to give you full visibility of the connection status, printer status, and media status of each printer on your network.

Supply warnings and maintenance warnings further simplify your printer supervision effort. Warnings notify you of when a supply, such as a label roll or printer ribbon, is running low so you can replace it-before it runs out and affects your organization's operations. Warnings also notify you of when, for example, a printer head replacement is due on a printer so an administrator can schedule printer maintenance that does not impact your operations.



Multiple views give you an at-a-glance global view of your entire printer network from a single desktop PC. If an issue develops with a printer, you can obtain more detailed information about the matter for troubleshooting, problem isolation, and problem resolution.

If you have several network administrators and helpdesk technicians concerned with your organization's printers, multiple copies of DMXNet Manager can run on the same network giving each individual a view of the entire enterprise's printers.

## DMXNet Manager - Centralized Printer Control

| CONFIGURE         | Setup your printers remotely, quickly, and easily  |
|-------------------|--|
| Control Mode      | Read a printer's current settings, change its settings, apply the same settings to another printer, and save the settings in a profile to give other printers the identical configuration. You may also reset a printer to its Datamax recommended default configuration settings. |
| Duplicate Printer | Quickly add a new printer to the network using the configuration of an existing printer.   |
| Printer Profiles  | Assure yourself that each printer has the right configuration.   |
| Supervision Mode  | Configure many printers at once.   |

| SUPERVISE           | Keep your printers operating at peak performance  |
|---------------------|---|
| Status Indicators   | Be alerted to the Connection Status, Printer Status, and Media Status of your printers so you can react quickly to any printer issue.   |
| Warnings            | Be alerted to low supply conditions and maintenance requirements so you can proactively service your printers without impacting your operations.  |
| Icons view          | Display your printers as icons for an at-a-glance view of the status indicators of many printers at once.   |
| Details view        | Display your printers in tabular form giving detailed information about each printer-its ID, name, group affiliation, IP address, status, status messages, and its status reporting priority.   |
| Tree view           | Display your enterprise's printers in a tree view for an at-a-glance view of the printers, printer groups, and printer network topology.  |
| Communications view | Display communications exchanges between the printers and DMXNet Manager. Error messages indicate any communications problems encountered so you can react immediate to resolve any issues, such as a file not found for a scripted load. |

| CONTROL              | Minimize printer downtime; maximize productivity  |
|----------------------|---|
| Add / Delete printer | Identify the Datamax printers you want to manage via DMXNet Manager.  |
| Add / Delete group   | Group your printers logically for topological viewing and easy management.  |
| Disable printer      | Stop sending status queries to an inactive printer so you do not impact the status reporting performance of the remaining printers if, for example, a printer is taken off-line for maintenance.  |
| Printer controls     | Remotely initiate any printer control-feed label, pause printer, cancel printing, print test label, print configuration label, reset printer, send data time, reprint last label, or print label.   |
| Load File            | Load any file into a given printer-firmware, fonts, graphics, labels, profiles, MCL printer applications, lookup files, and DPL Code files.   |
| Supplies Management  | Define the threshold warning levels at which you want to be alerted for low media supplies and maintenance requirements.  |
| Supplies Control     | Indicate when supplies have been replenished so low supply warning calculations can start again from 100% capacity.   |
| Scripts              | Load a predefined list of files and/or a configuration profile automatically into one or many / all printers. Scripts may be saved for repeated execution to assure that you always have the right files and configurations in your printers. |



## DMXNet Manager - Minimum Requirements

| Server                    |                                 |               |
|---------------------------|---------------------------------|---------------|
| Specification             | Requirement (min / recommended) |               |
| Operating System          | Windows XP                      | Windows 2000  |
| Processor speed (MHz)     | 233 / 300                       | 133 or higher |
| RAM (MB)                  | 64 / 128                        | 64            |
| Free hard disk space (MB) | 80                              | 80            |
| Display                   | 800 x 600                       | VGA or higher |

| Communication Interface       |            |          |                    |
|-------------------------------|------------|----------|--------------------|
| Supported Physical Interfaces | Serial Com | Parallel | Ethernet (Network) |
| Protocol stacks required      | n/a        | n/a      | TCP/IP and UDP     |
| Ports required                | n/a        | n/a      | 3000, 9100, 5001   |

| Datamax Printer Firmware |                         |
|--------------------------|-------------------------|
| MCL-Client               | Version 1.20 or greater |

| Datamax Printers Supported |  |                    |  |                  |                            |
|----------------------------|--|--------------------|--|------------------|----------------------------|
| Printer Class              | A-Class  | H-Class*           | I-Class  | M-Class          | W-Class                    |
| Printer Model              | A-4212<br>A-4310<br>A-4408<br>A-4606<br>A-6212<br>A-6310 | H-4212X<br>H-4310X | I-4210<br>I-4212<br>I-4308<br>I-4406<br>I-4604 | M-4208<br>M-4306 | W-6208<br>W-6308<br>W-8306 |

\* H-Class available Q4'06

Built to UL, Canadian, and European safety standards, FCC Class A emissions standard and CE Mark. This data sheet is for informational purposes only. DATAMAX MAKES NO WARRANTIES, EXPRESSED OR IMPLIED IN THIS SUMMARY. Specifications are subject to change without notice. Microsoft, Windows, Windows XP, Windows 2000, and Windows 98 are trademarks or registered trademarks of Microsoft Corporation in the United States and/or other countries. All other trademarks are the property of their respective owners. ©2006 DATAMAX BAR CODE PRODUCTS CORPORATION. All rights reserved. Datamax is an ISO 9001 registered company.

Rev. 09/06

**DATAMAX**  
A DOVER COMPANY



www.datamaxcorp.com