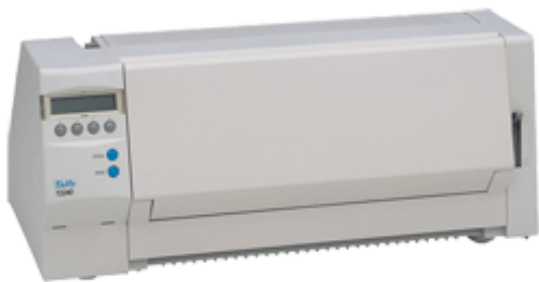


# T2240/24 & T2240/9 Serial Matrix

The ultimate in document printing



TallyGenicom's mid range serial matrix printers include the T2240/T2340 series products. Very popular transaction printers, they feature great ergonomics. Forms are easy to load as the paper's installed at the front, not the rear. With automatic top of form and zero tear the printers are easy to set up with no wasted forms.

The products are ideal for back office applications which include retail, local government, hospitals, warehousing and distribution. They include printing labels, shipping documents and multipart forms. Both 9 and 24 pin models are available for different print quality requirements; narrow and wide format machines offer the choices of small footprint and diverse range of forms. In line with market demands, the new printers are quieter and easier to use than competitive products in their class. All products support graphics and barcodes.

## Product Highlights

- High quality 9 and 24 pin printhead
- Narrow (80 columns - T2240) and wide format versions (136 columns - T2340) available
- Front feed for easy paper loading and reliable paper transport
- Zero tear, paper park, automatic top of form for ease of use
- Wide range of emulations for easy connection to a wide range of hosts
- Manual feed: front in, front out; ideal for cheques, statements, registration cards

---

Available Configuration:

**T2240/24** 24 pin version  
**T2240/9** 9 pin version

<b>Print Speed</b>	9 wire Printhead: At 10, 12 cpi: Draft: 413, 500 Copy/Draft: 310, 310 NLQ: 77, 77; 24 wire Printhead: At 10, 12 cpi: Draft: 409, 440 Copy/Draft: 275, 330 LQ: 92, 110
<b>Resolution</b>	9 pin: up to 144 x 240dpi; 24 pin: up to 360 x 360dpi
<b>Throughput</b>	T2x40/9: Letter Performance 363; Spreadsheet 185. T2x40/24: Letter Performance 368; Spreadsheet 175.
<b>Character Density</b>	10, 12, 15, 17.1, 20 cpi
<b>Line Density</b>	3, 4, 6, 8, 12 lpi
<b>Printhead Life</b>	300 million characters
<b>Standard Connectivity</b>	Parallel (Bi-directional). 64Kb selectable
<b>Optional Connectivity</b>	Serial RS232, external ethernet 10/100baseT, USB - parallel adapter
<b>Standard Emulation</b>	9 pin: MTPL, IBM ProPrinter XL, Epson FX850+/FX1050 + barcodes. 24 pin: MTPL, IBM ProPrinter XL24e, Epson LQ850+/LQ1050+/Esc P
<b>Fonts</b>	9 pin: Draft, Draft Copy, Quadrato, Courier. 24 pin: Draft, Draft Copy, Courier, Roman, Sans Serif, Prestige Elite, Script, OCR-A/B*, 13 barcodes, scaleable LCP fonts for 9 + 24 pin machines
<b>Consumables</b>	Ribbon: 4 million characters
<b>STD Paper Handling</b>	Tractor paper - push tractors with paper parking, view and tear at top of form cut sheet front insertion with integrated table
<b>Opt'l Paper Handling</b>	2nd push tractor
<b>Paper Type</b>	Continuous and Cut Forms
<b>Paper Weight</b>	Continuous Forms 60-120gsm. Cut sheet 80-120gsm
<b>Paper Size</b>	76 to 254mm wide
<b>Physical Weight</b>	9 pin: 9Kg; 24 pin: 11Kg
<b>PhysicalSize</b>	(HxWxD): 200 x 483 x 245mm
<b>Power Voltage</b>	230V
<b>Power Consumption</b>	55W printing
<b>Workload</b>	14,000 pages per month
<b>Reliability MTBF</b>	12,500 hours
<b>Drivers</b>	
<b>Temperature</b>	
<b>Humidity</b>	
<b>Acoustic</b>	9 pin: 54dB(A); 24 pin: 53dB(A)
<b>Warranty</b>	1 year return to base
<b>Option 1</b>	Push tractors, front; automatic cut sheet feeder, front
<b>Note</b>	Exceeding the monthly duty cycle will not void the warranty if TallyGenicom consumables and maintenance kits are used.

